



## Jenkins Ball Valve Product Line

|        |       |                                                                                                                                      |
|--------|-------|--------------------------------------------------------------------------------------------------------------------------------------|
| Brass: | 201J  | Threaded Ends<br>Size Range 1/4" - 3"<br>Full Port<br>600 CWP/150 SWP<br>UL Listed, FM/CSA/CGA/AGA Approved*                         |
|        | 202J  | C x C Solder Joint Ends<br>Size Range 1/2" - 2" Full Port<br>2 1/2" - 3" Regular Port<br>600 CWP                                     |
|        | 201SJ | Threaded Ends<br>Size Range 1/4" - 3"<br>Stainless Steel Trim<br>Full Port<br>600 CWP/150 SWP<br>UL Listed, FM/CSA/CGA/AGA Approved* |
|        | 202SJ | C x C Solder Joint Ends<br>Size Range 1/2" - 2" Full Port<br>2 1/2" - 3" Regular Port<br>Stainless Steel Trim<br>600 CWP             |
|        | 21J   | Threaded Ends<br>Size Range 1/4" - 2"<br>400 CWP<br>UL Listed*                                                                       |
|        | 22J   | C x C Solder Joint Ends<br>Size Range 1/2" - 2"<br>400CWP                                                                            |

\* See following catalog pages for size ranges of approvals and listings.

### General Features and Options

Jenkins ball valves are general purpose two-piece ball valves perfectly suited for industrial and commercial applications.

- **Blow-Out Proof Stem**

The internally loaded stem has an integral thrust collar which prevents stem removal while the valve is installed.

- **Adjustable Packing**

The packing may be tightened to compensate for wear throughout the life of the valve.

- **Lever Handle**

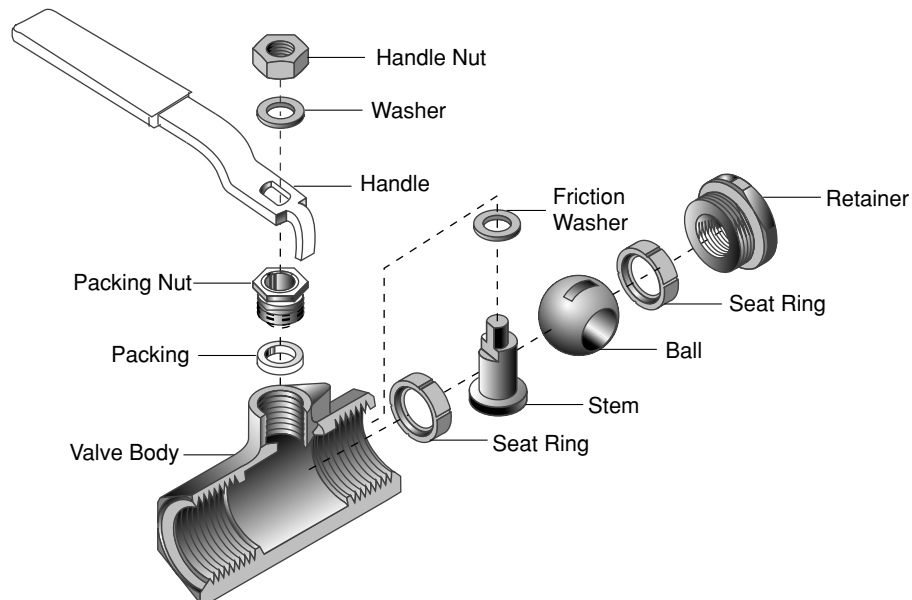
Heavy duty lever handles are standard for easy operation. All handles include a vinyl insulator sleeve for protection from high or low temperatures.

- **Options Include**

- Memory Stop
- Stem Extension/Handle Kits
- Tee Handles
- Stainless Steel Lever Handles

- **Approvals**

- 600 WOG Jenkins Ball Valves are manufactured in accordance with MSS-SP-110.
- UL Listed, FM/CSA/CGA/AGA approved models are available. See following pages for details.



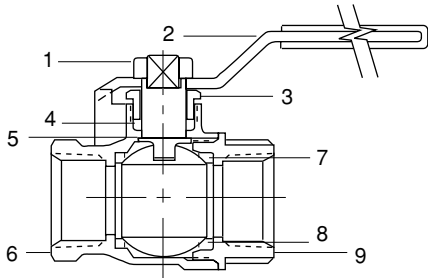


# Brass Ball Valves

Figure 201J

600 CWP • Full Port • Threaded Ends

UL/FM/CSA\*



## Figures 201J

### Size Range:

1/4 through 3 inches

### Working Pressures:

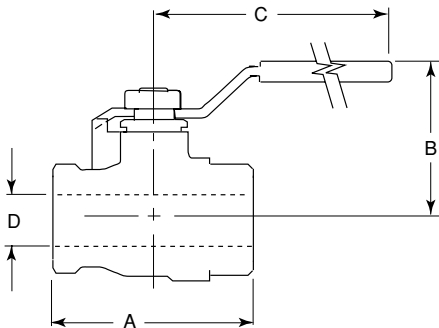
600 psi Cold Working Pressure

150 psi, Steam Basic Rating

## Features

- Steel Lever-Handle Standard
- Blowout-Proof Stem
- UL Listed (sizes 1/4" - 2")
- FM Approved (sizes 1/2" - 2")
- CSA/CGA/AGA Approved (sizes 1/2" - 2")
- MSS-SP-110

## Principal Parts & Materials



| Item | Part              | Material                                                       | ASTM                                                                             |
|------|-------------------|----------------------------------------------------------------|----------------------------------------------------------------------------------|
| 1    | Nut               | Brass                                                          | B16-C36000                                                                       |
| 2    | Handle            | Steel                                                          | A283-D                                                                           |
| 3    | Gland             | Brass                                                          | B16-C36000                                                                       |
| 4    | Stem packing      | PTFE                                                           |                                                                                  |
| 5    | Stem              | Brass                                                          | B16-C36000                                                                       |
| 6    | Body              | 1/4"-1 1/2"<br>2"-3"<br>Brass<br>Brass                         | B124-C37700<br>B584-C857                                                         |
| 7    | Ball disc packing | PTFE                                                           |                                                                                  |
| 8    | Ball              | 1/4"-1"<br>1 1/4" -2"<br>2 1/2" -3"<br>Brass<br>Brass<br>Brass | B16-C36000 Chrome Plated<br>B124-C37700 Chrome Plated<br>B584-C857 Chrome Plated |
| 9    | End Plug          | Brass                                                          | B124-C37700                                                                      |

## Dimensions and Weights

Inches (millimeters) - pounds (kilograms)

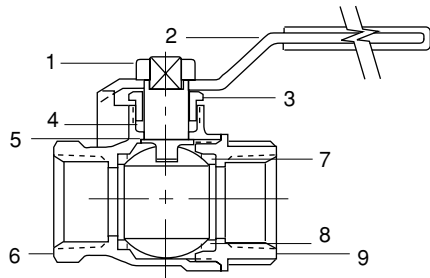
|     | 1/4-3/8<br>(10-12) | 1/2<br>(15)    | 3/4<br>(20)    | 1<br>(25)      | 1 1/4<br>(32)  | 1 1/2<br>(40)  | 2<br>(50)      | 2 1/2<br>(65)  | 3<br>(80)      |
|-----|--------------------|----------------|----------------|----------------|----------------|----------------|----------------|----------------|----------------|
| A   | 1.81<br>(46)       | 2.00<br>(51)   | 2.36<br>(60)   | 2.87<br>(73)   | 3.31<br>(84)   | 3.62<br>(92)   | 4.21<br>(107)  | 5.04<br>(128)  | 5.83<br>(148)  |
| B   | 1.46<br>(37)       | 1.54<br>(39)   | 1.97<br>(50)   | 2.13<br>(54)   | 2.60<br>(66)   | 2.76<br>(70)   | 3.47<br>(88)   | 3.86<br>(98)   | 4.17<br>(106)  |
| C   | 3.31<br>(84)       | 3.31<br>(84)   | 4.65<br>(118)  | 4.65<br>(118)  | 5.28<br>(134)  | 5.28<br>(134)  | 7.87<br>(200)  | 7.87<br>(200)  | 7.87<br>(200)  |
| D   | 0.39<br>(10)       | 0.51<br>(13)   | 0.79<br>(20)   | 0.98<br>(25)   | 1.26<br>(32)   | 1.50<br>(38)   | 1.97<br>(50)   | 2.48<br>(63)   | 2.95<br>(75)   |
| WTS | 0.36<br>(0.16)     | 0.42<br>(0.19) | 0.82<br>(0.37) | 1.26<br>(0.57) | 2.05<br>(0.93) | 2.82<br>(1.28) | 4.72<br>(2.14) | 5.75<br>(2.61) | 8.22<br>(3.73) |



# Brass Ball Valves

Figure 201SJ

## 600 CWP • Full Port • Threaded Ends



### Figures 201SJ

#### Size Range:

1/4 through 3 inches

#### Working Pressures:

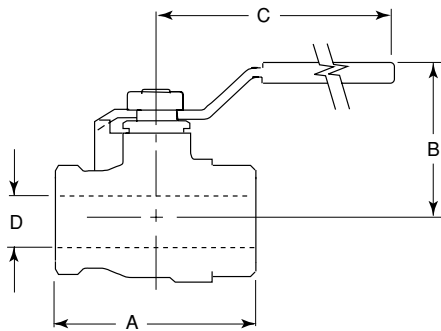
600 psi Cold Working Pressure

150 psi, Steam Basic Rating

### Features

- Stainless Steel Ball & Stem
- Steel Lever-Handle Standard
- Blowout-Proof Stem
- UL Listed (sizes 1/4" - 2")
- FM Approved (sizes 1/2" - 2")
- CSA/CGA/AGA Approved (sizes 1/2" - 2")
- MSS-SP-110

### Principal Parts & Materials



| Item | Part              | Material                               | ASTM                     |
|------|-------------------|----------------------------------------|--------------------------|
| 1    | Nut               | Brass                                  | B16-C36000               |
| 2    | Handle            | Steel                                  | A283-D                   |
| 3    | Gland             | Brass                                  | B16-C36000               |
| 4    | Stem packing      | PTFE                                   |                          |
| 5    | Stem              | Type 316 SS                            |                          |
| 6    | Body              | 1/4"-1 1/2"<br>2"-3"<br>Brass<br>Brass | B124-C37700<br>B584-C857 |
| 7    | Ball disc packing | PTFE                                   |                          |
| 8    | Ball              | 1/2"-2"<br>316 SS                      |                          |
| 9    | End Plug          | Brass                                  | B124-C37700              |

### Dimensions and Weights

Inches (millimeters) - pounds (kilograms)

|     | 1/4-3/8<br>(10-12) | 1/2<br>(15)    | 3/4<br>(20)    | 1<br>(25)      | 1 1/4<br>(32)  | 1 1/2<br>(40)  | 2<br>(50)      | 2 1/2<br>(65)  | 3<br>(80)      |
|-----|--------------------|----------------|----------------|----------------|----------------|----------------|----------------|----------------|----------------|
| A   | 1.81<br>(46)       | 2.00<br>(51)   | 2.36<br>(60)   | 2.87<br>(73)   | 3.31<br>(84)   | 3.62<br>(92)   | 4.21<br>(107)  | 5.04<br>(128)  | 5.83<br>(148)  |
| B   | 1.46<br>(37)       | 1.54<br>(39)   | 1.97<br>(50)   | 2.13<br>(54)   | 2.60<br>(66)   | 2.76<br>(70)   | 3.47<br>(88)   | 3.86<br>(98)   | 4.17<br>(106)  |
| C   | 3.31<br>(84)       | 3.31<br>(84)   | 4.65<br>(118)  | 4.65<br>(118)  | 5.28<br>(134)  | 5.28<br>(134)  | 7.87<br>(200)  | 7.87<br>(200)  | 7.87<br>(200)  |
| D   | 0.39<br>(10)       | 0.51<br>(13)   | 0.79<br>(20)   | 0.98<br>(25)   | 1.26<br>(32)   | 1.50<br>(38)   | 1.97<br>(50)   | 2.48<br>(63)   | 2.95<br>(75)   |
| WTS | 0.36<br>(0.16)     | 0.42<br>(0.19) | 0.82<br>(0.37) | 1.26<br>(0.57) | 2.05<br>(0.93) | 2.82<br>(1.28) | 4.72<br>(2.14) | 5.75<br>(2.61) | 8.22<br>(3.73) |

### 600 CWP • Solder Joint Ends

**Figure 202J**

**Size Range:**

1/2 through 3 inches

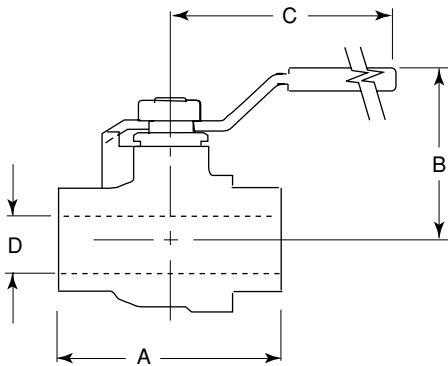
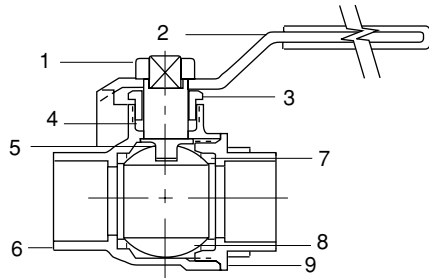
**Working Pressures:**

600 psi Cold Working Pressure (1/2"-2")

400 psi Cold Working Pressure (2 1/2"-3")

**Features**

- Full Port: 1/2" – 2"
- Regular Port: 2 1/2" – 3"
- Blowout-Proof Stem
- Steel Lever Handle Standard
- MSS-SP-110



### Principal Parts & Materials

| Item | Part              | Material                                                     | ASTM                                                                             |
|------|-------------------|--------------------------------------------------------------|----------------------------------------------------------------------------------|
| 1    | Nut               | Brass                                                        | B16-C36000                                                                       |
| 2    | Handle            | Steel                                                        | A283-D                                                                           |
| 3    | Gland             | Brass                                                        | B16-C36000                                                                       |
| 4    | Stem packing      | PTFE                                                         |                                                                                  |
| 5    | Stem              | Brass                                                        | B16-C36000                                                                       |
| 6    | Body              | 1/4"-11/2"<br>2"-3"<br>Brass                                 | B124-C37700<br>B584-C857                                                         |
| 7    | Ball disc packing | PTFE                                                         |                                                                                  |
| 8    | Ball              | 1/4"-1"<br>1 1/4"-2"<br>2 1/2"-3"<br>Brass<br>Brass<br>Brass | B16-C36000 Chrome Plated<br>B124-C37700 Chrome Plated<br>B584-C857 Chrome Plated |
| 9    | End Plug          | Brass                                                        | B124-C37700                                                                      |

### Dimensions and Weights

Inches (millimeters) - pounds (kilograms)

|     | 1/2<br>(15)    | 3/4<br>(20)    | 1<br>(25)      | 1 1/4<br>(32)  | 1 1/2<br>(40)  | 2<br>(50)      | 2 1/2<br>(65)  | 3<br>(80)      |
|-----|----------------|----------------|----------------|----------------|----------------|----------------|----------------|----------------|
| A   | 1.93<br>(49)   | 2.75<br>(70)   | 3.31<br>(84)   | 3.78<br>(96)   | 4.29<br>(109)  | 5.31<br>(135)  | *              | *              |
| B   | 1.53<br>(39)   | 1.97<br>(50)   | 2.13<br>(54)   | 2.60<br>(66)   | 2.76<br>(70)   | 3.46<br>(88)   | *              | *              |
| C   | 3.31<br>(84)   | 4.65<br>(118)  | 4.65<br>(118)  | 5.28<br>(134)  | 5.28<br>(134)  | 7.87<br>(200)  | *              | *              |
| D   | 0.51<br>(13)   | 0.78<br>(20)   | 0.98<br>(25)   | 1.26<br>(32)   | 1.50<br>(38)   | 1.97<br>(50)   | *              | *              |
| WTS | 0.37<br>(0.17) | 0.77<br>(0.35) | 1.15<br>(0.52) | 1.94<br>(0.88) | 2.67<br>(1.21) | 4.41<br>(2.00) | 5.09<br>(2.31) | 7.58<br>(3.44) |

### 600 CWP • Solder Joint Ends

#### Figure 202SJ

##### Size Range:

1/2 through 3 inches

##### Working Pressures:

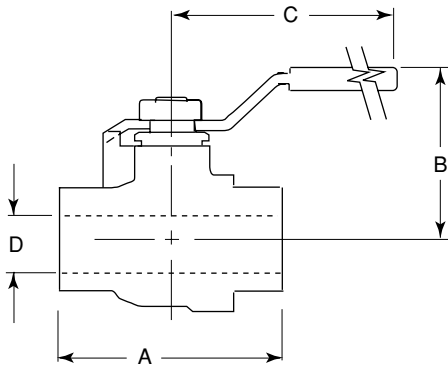
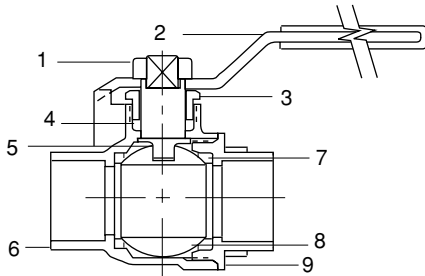
600 psi Cold Working Pressure (1/2"-2")

400 psi Cold Working Pressure (2 1/2"-3")

Figure 202SJ has stainless steel ball and stem.

#### Features

- Stainless Steel Ball & Stem
- Full Port: 1/2" – 2"
- Regular Port: 2 1/2" – 3"
- Blowout-Proof Stem
- Steel Lever Handle Standard
- MSS-SP-110



#### Principal Parts & Materials

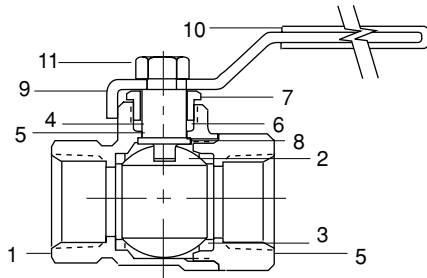
| Item | Part              | Material                              | ASTM                     |
|------|-------------------|---------------------------------------|--------------------------|
| 1    | Nut               | Brass                                 | B16-C36000               |
| 2    | Handle            | Steel                                 | A283-D                   |
| 3    | Gland             | Brass                                 | B16-C36000               |
| 4    | Stem packing      | PTFE                                  |                          |
| 5    | Stem              | Type 316 SS                           |                          |
| 6    | Body              | 1/4"-11/2"<br>2"-3"<br>Brass<br>Brass | B124-C37700<br>B584-C857 |
| 7    | Ball disc packing | PTFE                                  |                          |
| 8    | Ball              | 1/2"-2"<br>316 SS                     |                          |
| 9    | End Plug          | Brass                                 | B124-C37700              |

#### Dimensions and Weights

Inches (millimeters) - pounds (kilograms)

|     | 1/2<br>(15)    | 3/4<br>(20)    | 1<br>(25)      | 1 1/4<br>(32)  | 1 1/2<br>(40)  | 2<br>(50)      | 2 1/2<br>(65)  | 3<br>(80)      |
|-----|----------------|----------------|----------------|----------------|----------------|----------------|----------------|----------------|
| A   | 1.93<br>(49)   | 2.75<br>(70)   | 3.31<br>(84)   | 3.78<br>(96)   | 4.29<br>(109)  | 5.31<br>(135)  | *              | *              |
| B   | 1.53<br>(39)   | 1.97<br>(50)   | 2.13<br>(54)   | 2.60<br>(66)   | 2.76<br>(70)   | 3.46<br>(88)   | *              | *              |
| C   | 3.31<br>(84)   | 4.65<br>(118)  | 4.65<br>(118)  | 5.28<br>(134)  | 5.28<br>(134)  | 7.87<br>(200)  | *              | *              |
| D   | 0.51<br>(13)   | 0.78<br>(20)   | 0.98<br>(25)   | 1.26<br>(32)   | 1.50<br>(38)   | 1.97<br>(50)   | *              | *              |
| WTS | 0.37<br>(0.17) | 0.77<br>(0.35) | 1.15<br>(0.52) | 1.94<br>(0.88) | 2.67<br>(1.21) | 4.41<br>(2.00) | 5.09<br>(2.31) | 7.58<br>(3.44) |

### 400 CWP • Threaded Ends - Regular Port



**Figure 21J**

**Size Range:**

1/4 through 2 inches

**Working Pressures:**

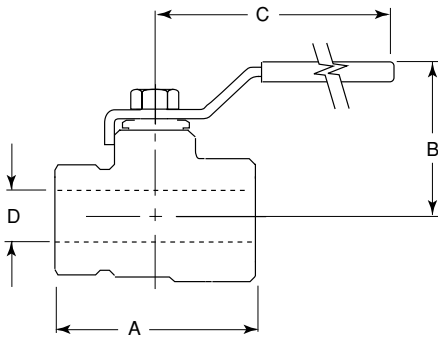
400 psi Cold Working Pressure

**Features**

- Threaded Ends
- Regular Port
- Blowout Proof Stem
- PTFE Seats and Packing
- UL Approved

### Principal Parts & Materials

| Item | Part                           | Material          | ASTM                                                  |
|------|--------------------------------|-------------------|-------------------------------------------------------|
| 1    | Body 1/2"-1 1/2"<br>Body 2"    | Brass<br>Brass    | B16 C36000<br>B584 C857                               |
| 2    | Ball 1/2"-1"<br>Ball 1 1/4"-2" | Brass<br>Brass    | B16 C36000 Chrome Plated<br>B124 C37700 Chrome Plated |
| 3    | Seat ring                      | PTFE              |                                                       |
| 4    | Stem                           | Brass             | B16 C36000                                            |
| 5    | Retainer                       | Brass             | B124 C37700                                           |
| 6    | Packing                        | PTFE              |                                                       |
| 7    | Packing Nut                    | Brass             | B16 Alloy 360                                         |
| 8    | Friction washer                | PTFE              |                                                       |
| 9    | Handle                         | Steel-Zinc plated | A263-D                                                |
| 10   | Handle cover                   | Vinyl             |                                                       |
| 11   | Handle nut                     | Steel-AISI1010    |                                                       |

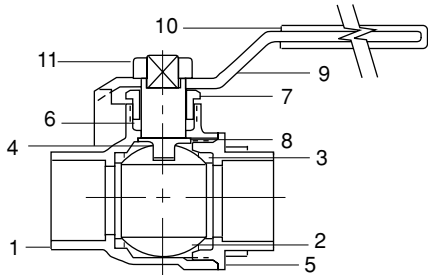


### Dimensions and Weights

Inches (millimeters) - pounds (kilograms)

|     | 1/4<br>(10)  | 3/8<br>(12)  | 1/2<br>(15)    | 3/4<br>(20)    | 1<br>(25)      | 1 1/4<br>(32)  | 1 1/2<br>(40)  | 2<br>(50)      |
|-----|--------------|--------------|----------------|----------------|----------------|----------------|----------------|----------------|
| A   | 1.65<br>(42) | 1.65<br>(42) | 1.89<br>(48)   | 2.21<br>(56)   | 2.48<br>(63)   | 2.91<br>(74)   | 3.31<br>(84)   | 3.66<br>(93)   |
| B   | 1.46<br>(37) | 1.46<br>(37) | 1.46<br>(37)   | 1.58<br>(40)   | 1.97<br>(50)   | 2.13<br>(54)   | 2.60<br>(66)   | 2.76<br>(70)   |
| C   | 3.14<br>(84) | 3.14<br>(84) | 3.31<br>(84)   | 3.31<br>(84)   | 4.65<br>(118)  | 4.65<br>(118)  | 5.28<br>(134)  | 5.28<br>(134)  |
| D   | .39<br>(10)  | .39<br>(10)  | 0.51<br>(10)   | 0.59<br>(15)   | 0.79<br>(20)   | 1.00<br>(25)   | 1.26<br>(32)   | 1.50<br>(38)   |
| WTS | .28<br>(.12) | .28<br>(.12) | 0.33<br>(0.15) | 0.50<br>(0.23) | 0.86<br>(0.39) | 1.25<br>(0.57) | 2.00<br>(0.91) | 2.50<br>(1.14) |

### 400 CWP • Solder Joint Ends - Regular Port



**Figure 22J**

**Size Range:**

1/2 through 2 inches

**Working Pressures:**

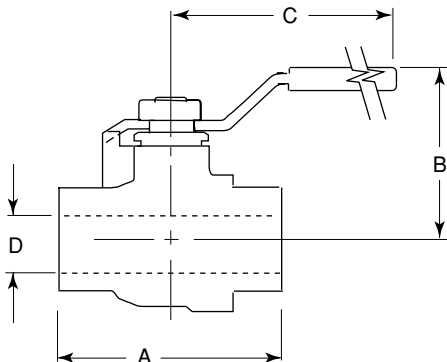
400 psi Cold Working Pressure

**Features**

- Solder Ends
- Regular Port
- Blowout Proof Stem
- PTFE Seats and Packing

### Principal Parts & Materials

| Item | Part                          | Material          | ASTM                                                  |
|------|-------------------------------|-------------------|-------------------------------------------------------|
| 1    | Body 1/2"-11/2"<br>Body 2"    | Brass<br>Brass    | B16 C36000<br>B584 C857                               |
| 2    | Ball 1/2"-1"<br>Ball 11/4"-2" | Brass<br>Brass    | B16 C36000 Chrome Plated<br>B124 C37700 Chrome Plated |
| 3    | Seat ring                     | PTFE              |                                                       |
| 4    | Stem                          | Brass             | B16 C36000                                            |
| 5    | Retainer                      | Brass             | B124 C37700                                           |
| 6    | Packing                       | PTFE              |                                                       |
| 7    | Packing Nut                   | Brass             | B16 Alloy 360                                         |
| 8    | Friction washer               | PTFE              |                                                       |
| 9    | Handle                        | Steel-Zinc plated | A263-D                                                |
| 10   | Handle cover                  | Vinyl             |                                                       |
| 11   | Handle nut                    | Steel-AISI1010    |                                                       |



### Dimensions and Weights

Inches (millimeters) - pounds (kilograms)

|     | 1/2<br>(15)    | 3/4<br>(20)    | 1<br>(25)      | 1 1/4<br>(32)  | 1 1/2<br>(40)  | 2<br>(50)      |
|-----|----------------|----------------|----------------|----------------|----------------|----------------|
| A   | 1.89<br>(48)   | 2.64<br>(67)   | 3.07<br>(78)   | 3.43<br>(87)   | 4.02<br>(102)  | 4.80<br>(122)  |
| B   | 1.46<br>(37)   | 1.58<br>(40)   | 1.97<br>(50)   | 2.13<br>(54)   | 2.60<br>(66)   | 2.76<br>(70)   |
| C   | 3.31<br>(84)   | 3.31<br>(84)   | 4.65<br>(118)  | 4.65<br>(118)  | 5.28<br>(134)  | 5.28<br>(134)  |
| D   | 0.51<br>(10)   | 0.59<br>(15)   | 0.79<br>(20)   | 1.00<br>(25)   | 1.26<br>(32)   | 1.50<br>(38)   |
| WTS | 0.26<br>(0.12) | 0.46<br>(0.21) | 0.82<br>(0.37) | 1.05<br>(0.48) | 1.83<br>(0.83) | 2.75<br>(1.25) |



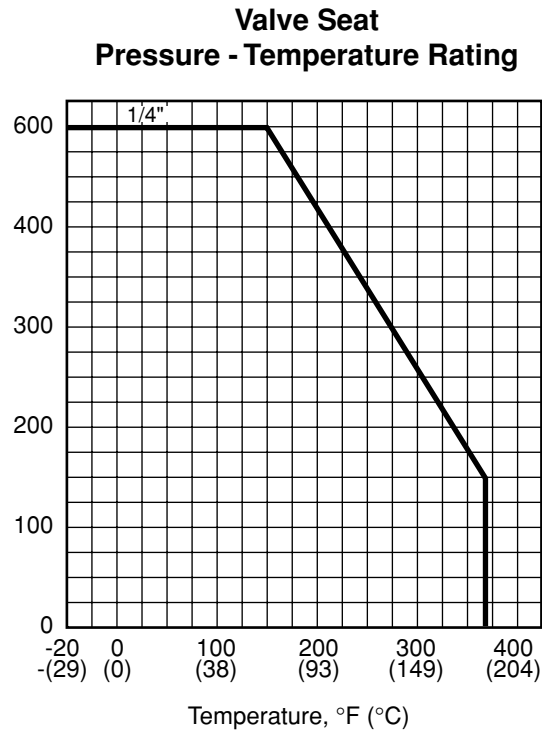


# Brass Ball Valves

Figure 201J    Figure 202J  
Figure 201SJ    Figure 202SJ

**Pressure/Temperature Ratings**

**600 CWP**



## Optional Accessories

- **Memory Stop Handles**
- **Extensions Stems**
- **Tee Handles**
- **Stainless Steel Lever Handles**